

Aficio™ AP 3800C

Aficio™



**Office Workgroup Printing
in Colour ... at B/W Speed**

RICOH
Image Communication

The Colour Conquering Challenger

Colour communicates. Business documents containing graphs in Microsoft® Powerpoint™, diagrams in Microsoft® Excel™, charts drawn from statistical analyses or a Balanced Scorecard® make up the bulk of business documents these days.

Try interpreting these graphics without colour. It's not feasible. Hence you purchase one additional full-colour laser printer with colour-management features you may never use.

Yet, what 80% of the business users need is a colour capable output system that's hassle-free to operate, expandable and as fast as a B/W laser printer. A printer that's designed to be used by groups of five to 20 people.

The Aficio™AP3800C is Ricoh's answer to these essentials. The Aficio™AP3800C sprints at an unchallenged 28 pages per minute (ppm) in colour mode, and 38 ppm in B/W mode. You can expand it almost infinitely at will. It has a small footprint so it will fit in a regular office almost without being noticed. The Aficio™AP3800C is a new generation of colour-capable laser printer. It is more than a mere printer – it's a document output handling system. And the best part is that it is affordable.



B/W or Colour: an Easy Choice

The Aficio™AP3800C offers trouble-free, high-precision colour capability for the general office. Its speed performance in colour is even better than most B/W laser printers. And thanks to a compact design and user-friendly operation, the Aficio™AP3800C is the ideal workgroup printer.



The Aficio™AP3800C delivers fast and accurate output results in both black-and-white and full-colour.

It's not a Choice, it's an Ultimatum

Truth of life: monochrome printing engines are fast. Colour printers are teeth-grindingly slow. But there's more to colour printers. They are often aimed at colour professionals, not necessarily at the business user.

So, here is your ultimatum according to traditional printer vendors: accept that colour is slow and learn to live with the redundant inclusion of manual colour management tools that increase the price. However, analysts found that 80% of offices need the capability to publish documents with accurate colour without hassle.

But speed matters most while colour is said to prevent high speed. The Aficio™AP3800C challenges this belief. It is a high-speed document output system for small to mid-sized workgroups. It offers hassle-free, accurate colour capability for general business use. And it offers choice - there is no need for manually fine-tuning the system if you don't want to.

Speed is More than a Fast Printing Engine

The Aficio™AP3800C is a very fast output system. Colour documents are published at 28 ppm, B/W documents at 38. Even more astonishing: duplexing is just as fast as printing on one side of the page! Both its colour and B/W printing speeds are generally only found in high-speed/high-volume systems with a very high price tag. Yet, the Aficio™AP3800C sells at a fair price.

But speed is more than a high ppm rate. While most printers in the market take over half a minute to get your first B/W page out, the Aficio™AP3800C leaps ahead of the crowd with its 7 seconds. The Aficio™AP3800C's first colour print performance is world-class: only 9 seconds. That's even better than most B/W laser printers! Warm-up time for the Aficio™AP3800C is spectacular as well: it only takes 120 seconds.

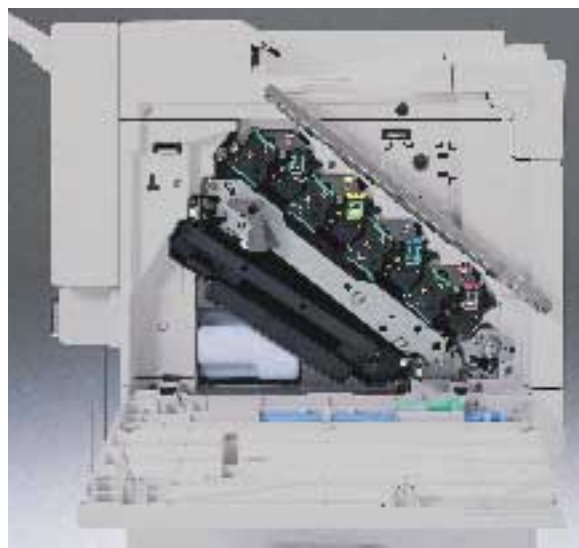
Colour Matters, not Size

Most colour laser printers are huge. That's because there are at least three toner drums inside - one for each colour. The Aficio™AP3800C has four toner drums - one extra black toner drum to obtain rich blacks. So you might think it must be colossal, but take a glimpse at its dimensions...

No, you're not dreaming. The Aficio™AP3800C is no more colossal than a small-footprint B/W workgroup laser printer. Ricoh succeeded in stair-stepping the four drums inside the machine, so that they form a 45° degree straight paper path. This also decreases the risks of a paper jam.



Inside the Aficio™AP3800C, four separate drums guarantee high speed. The drums form a 45° straight path, which makes the AP3800C a remarkably compact printer.



Document Handling Giant

The Aficio™AP3800C has strong input and output handling capabilities. It holds 3,100 sheets of paper. Furthermore, the duplex speed equals the simplex speed! The Aficio™AP3800C is designed to last: you can easily print 50,000 pages a month.

Endless Possibilities

Proper document output management calls for strong handling capabilities. The Aficio™AP3800C is true to its calling. It offers a virtually limitless document output choice. It comes standard with two 500-sheet trays - one for A4 paper, and one for sheets ranging in size from A5 to A3. There's a bypass tray for 100 sheets of paper ranging from 60 g/m² to 163 g/m² and up to A3 oversize, or even OHP stock. You can install two optional paper trays, holding 500 sheets each, ranging from A5 to A3. A3 oversize printing is possible from the bypass tray. Additionally, there's a large capacity tray of 2,000 sheets. In total, the Aficio™AP3800C has a paper capacity of 3,100 sheets - befitting a document output system designed to operate in workgroups of up to 20 people.

Endurance

The Aficio™AP3800C is designed for 10,000 to 50,000 pages per month, so you can publish at will. You can churn out documents and keep publishing, even if a tray runs out of paper. The Aficio™AP3800C is smart enough to automatically turn to another tray that still holds paper. Don't worry about paper size, orientation or media type. The Aficio™AP3800C will take care of it all.

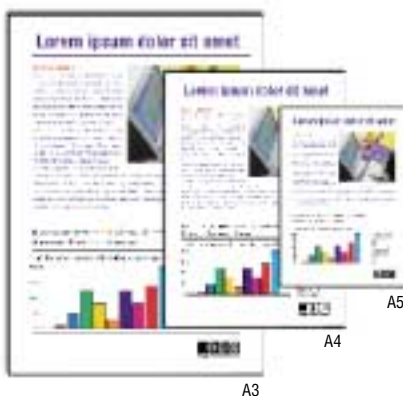
And if the Aficio™AP3800C does run out of paper because all the trays are empty, it will alert the user. Load paper and this document output system will restart where it left off. And with a maximum of 384 MB of internal memory, even the most complicated pages are published in no time.

Maximum Output Equals Maximum Input

Most workgroup printers are limited in their output handling capacity. That's because they weren't designed as a document output system. The Aficio™AP3800C is. It has a standard output tray of 500 sheets, which will serve most purposes.

An optional four-bin mailbox of 125 sheets each will allow four groups of users to send their output to dedicated bins.

The optional finisher adds stapling capabilities without speed penalty, as well as punching. In shift tray mode - allowing users to quickly recognise document sets - this finisher is capable of processing 2,000 sheets. It goes without saying that the Aficio™AP3800C also supports duplex printing on A5 to A3 paper.



Via the optional paper tray users can print on paper sizes ranging from A5 up to A3.



The large capacity tandem system tray on the Aficio™AP3800C holds up to 2,000 sheets.

The Network is the Output System

The Aficio™AP3800C comes with strong network support. Device management, platform-independent job management and full support for both legacy desktop systems and emerging interfaces such as USB and FireWire®.

Interfacing without Fear

There's no typical office environment, so the Aficio™AP3800C comes with about every interface in the book. It has a standard auto-sensing Fast Ethernet 10/100 Base TX NIB. Hooking up this system to a workstation is easy too. Whether you still use legacy desktops with a bi-directional parallel port or emerging interfaces such as USB and IEEE 1394 FireWire® (optional), the Aficio™AP3800C can process the information and turn it into paper documents within seconds.

Protocols & Platforms

The Aficio™AP3800C supports every modern network protocol: TCP/IP, IPX/SPX, NetBEUI/NetBIOS, and AppleTalk®. It feels right at home with Microsoft® Windows® 9x, Windows® NT 4.x, Windows® 2000 Professional, Apple® Mac OS 7.6.1 and higher, and Windows® Me. Its support for Unix® environments (Sun Microsystems® Solaris 7, SunOS 4.1.x) and Red Hat® 6.2 makes the Aficio™AP3800C suited for engineering or scientific as well as office environments.

Deviced Management with SmartNetMonitor™

How will you manage the Aficio™AP3800C's unique document output capabilities when there are other Aficio™ products living on the network as well? The answer is device management; the tool is called SmartNetMonitor™. SmartNetMonitor™ for Client enables users to see the status and functions of each printer and your Aficio™AP3800C on the LAN.

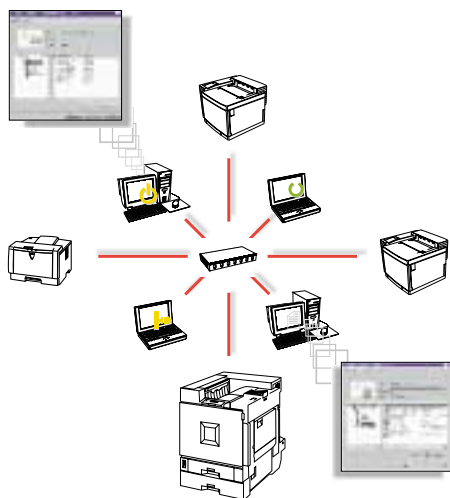
With the SmartNetMonitor™ for Admin, you can remotely install and proactively manage all the printer resources on the network. It allows you to configure, re-configure and check printers and NIBs from your desk.

Print Server Included

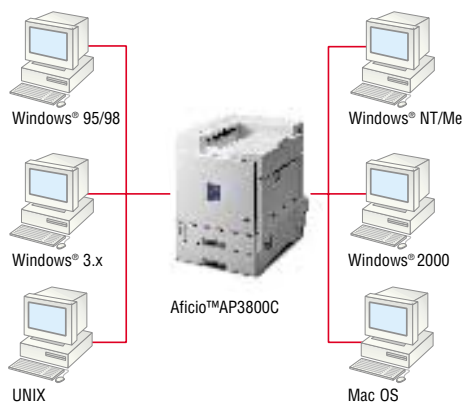
SmartNetMonitor™ not only makes printer management a snap, it also makes a print server obsolete. Eliminating the print server equals getting rid of a potential bottleneck and network dependence. Hence, with SmartNetMonitor™ your users print faster across both TCP/IP and NetBEUI networks.

Platform-independent Job Management

SmartNetMonitor™ works independently from network operating systems. It allows your administrators to receive information on the status of Ricoh equipment through a browser like Netscape® Navigator® or Microsoft® Internet Explorer®. SmartNetMonitor™ tells your users when their print job has finished. With Recovery Print, they don't have to bother about empty paper trays: SmartNetMonitor™ automatically finds an alternative printer to take over the print job. Parallel Printing allows users to balance the workload across a number of printers, speeding up printing dramatically.



Via SmartNetMonitor™ you can track the status of any network printer from your desktop.



The Aficio™AP3800C supports all major network protocols.

Document Management Excellence

Printing with Ricoh's new RPCS™ (Refined Print Command Stream) has never been faster. The Aficio™AP3800C supports not only RPCS™, but also PCL5c and Adobe® PostScript® 3™ to accommodate every job. The Aficio™AP3800C has a low total cost of ownership as well, and it is designed to have a low impact on the environment.

The Basics

Often, a business environment is populated with divergent platforms, systems and applications. So you need an output system that can handle various output description protocols. The Aficio™AP3800C supports HP® PCL5c™ to handle fast output of common office documents, and Adobe® PostScript® 3™ to handle the output of accurate colour PostScript® files and the occasional DTP-file. Fast doesn't mean compromising on quality: at true 1,200 dpi, this system beats even high-quality B/W printers.

The Next Generation

The Aficio™AP3800C supports Ricoh's own next-generation printing language, RPCS™ (Refined Printing Command Stream). RPCS™ was optimised for the output of 99% of your business applications - running in the Windows® environment.

The result is a much faster printing speed than is possible with other printer description languages. And RPCS™ does more to speed up the entire printing process.

Traditional driver user-interfaces contain a tabbed window that your users have to wade through to exploit the full capabilities of their printer. This process may take a long time, discouraging users from exploiting their printers' full capabilities, and adding to the distress factor.

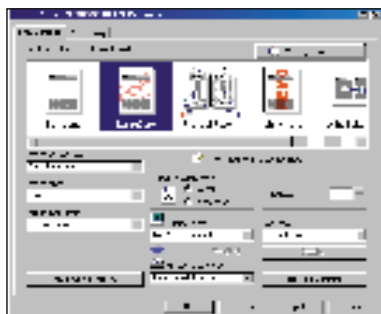
RPCS™ is icon-bar based, requiring one click to start a printing job - any printing job.

RPCS™ enables users to save different printer settings for different printing jobs and stores these settings under a user-created icon. In fact, users might not even need to pre-define settings themselves. Typical printing jobs have already been prepared under an icon out-of-the-box, saving valuable time and preventing much frustration.

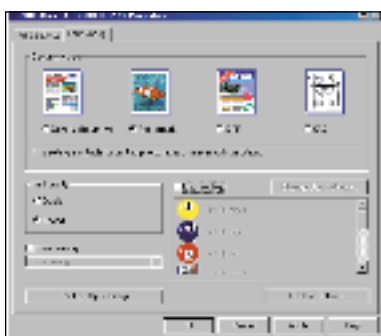
As printing jobs get more complicated, the icon-bar based interface helps reduce workload and increase productivity. For example, with RPCS™, any printing job is only one click away while some traditional driver user-interfaces require users to click their way through 11 options to start a somewhat out-of-the-ordinary printing job. The RPCS™ interface contributes to your users' physical comfort, and will certainly not increase their risk of getting Repetitive Stress Injury (RSI). With RPCS™, your users will finally exploit the full capabilities of your printers as well. Users will no longer avoid using duplexing, stapling, punching and other features, leading to more professionally looking documents, cost-savings, and a far more economic and ecological use of resources.

Document Security

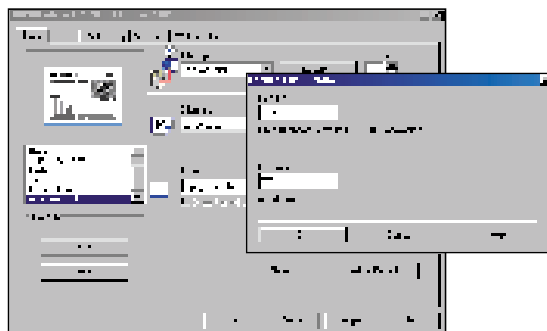
Would you ever trust your documents to a system that doesn't handle sensitive information securely? Of course not. That's why the Aficio™AP3800C contains a feature called Locked Print™. When printing through RPCS™, Locked Print™ enables the initiation of a job by typing in a User-ID and a password on the PC in the printer driver's dialogue window. The Aficio™AP3800C will keep the published information on its optional hard disk until the user confirms his User-ID and password at the printer control panel.



With Ricoh's RPCS™ all printing jobs are simply started via a click on your PC screen.



Even the print quality of a specific job can easily be adjusted on your PC screen.



Thanks to Locked Print™, you can keep confidential information from unauthorised prying eyes.

Total Cost of Ownership and the Environment

For all its functionality, the Aficio™AP3800C is a very economical solution. Not only its initial price but also its Total Cost of Ownership are remarkably low for a high-end colour laser printer. Moreover, the Aficio™AP3800C boasts an environment-friendly design and low power consumption.



Energy Star® compliant, the Aficio™AP3800C operates quietly and consumes very little energy.

Low TCO Keeps You Happy

Perhaps you thought that the high-end document output features of the Aficio™AP3800C would mean a high price, but that's not the case. In fact, this output system has a price comparable to the average networkable B/W printer.

Preserving Paper

Preserving paper is good for the environment, but consuming less paper and toner saves money too. The Aficio™AP3800C has full support for Ricoh's Sample Print™ system. When users have to print large numbers of document sets, they can check a proof version for accuracy and if correct, immediately print the remaining sets by the press of a single button. They don't have to return to their desk, thus boosting their productivity.

An Environment Star

Ricoh is a world leader in ensuring its products have a low impact on the environment. Everything - from design to end-of-life of a product - in Ricoh's production and administrative units, is tied to a zero-waste and zero-emission policy. The Aficio™AP3800C is no exception. It supports the Energy Star® Tier 2 specifications, runs very quietly and consumes less than 1.3 kWh while operating.

The Aficio™AP3800C offers sophisticated document output features at a modest price and low TCO.



Aficio™ AP 3800C

Specifications

General

Technology: 4 drums tandem method,
electro-photographic printing
and dual toner development

Print Speed:
Black-and-white:
Simplex/Duplex: 38 ppm (A4)
Full-colour:
Simplex/Duplex: 28 ppm (A4)

First Print Speed:
Black-and-white: 7,0 seconds
Full-colour: 9,0 seconds

Dimensions: 575 x 648 x 715 mm

Weight: 77 kg (without consumables)

Rating Power Specification:
220 V - 240 V, 50/60 Hz

Environmental Features:
Energy Star® compliant

Duty Cycle: 200,000 pages/month

Controller

Processor: RM7000 250 MHz
Printer Languages: PCL5c emulation,
Adobe® PostScript® 3™, RPCS™

Resolution:
PCL5: 300 x 300 dpi/600 x 600 dpi
PS3: 600 x 600 dpi/
1,200 x 600 dpi/1,200 x 1,200 dpi
RPCS™: 600 x 600 dpi/
1,200 x 600 dpi/1,200 x 1,200 dpi

Memory: Standard: 32 MB
Max.: 384 MB
Optional HDD: 20 GB

Network Management:
PCL5c: Windows® 3.1x/95/98/Me/NT4.0/2000
PS3: Windows® 3.1x/95/98/Me/NT4.0/2000,
Mac OS 7.6.1 or later
RPCS™: Windows® 95/98/Me/NT4.0/2000

Fonts:
PCL5c: 35 Intelli fonts
10 TrueType fonts
1 Bitmap font
(31 fonts can be downloaded by Font Manager)
PS3: 136 Adobe® fonts (type1, 2, 14)

Connectivity

Network Protocols: TCP/IP, IPX/SPX,
NetBEUI and AppleTalk®

Supported Network: Novell® NetWare® 3.11
or later, 4.1 or later, 5.0, 5.1
Windows® NT4.0, 2000
UNIX® Solaris 2.5.1, 2.6, 7, 8
HP-UX 8.x, 9.x, 10.x, 11.0
Red Hat® Linux 6.2

Interface:
Standard: Bi-directional IEEE1284 ECP
10BaseT/100BaseTX
Optional: IEEE1394(FireWire®)

Paper Handling

Paper Input Capacity:
Standard: 2 x 500-sheet Paper Trays
100-sheet Bypass Tray
Max.: 3,100 sheets with optional
2,000-sheets Large Capacity Tray

Paper Output Capacity:
Standard: 500 sheets face down
and 100 sheets face up
Maximum: 2,600 sheets
with optional Finisher

Paper Size:
Simplex/Duplex: A5 - A3
Bypass Tray: 305 x 458 mm (A3 oversize)

Paper Weight:
Simplex/Duplex: 60 - 105 g/m²
Bypass Tray: 60 - 163 g/m²

Media: Plain Paper, Recycled Paper,
Transparencies, Laser Printer labels,
Envelopes

Consumables

Toners:
Black: 20,000 sheets*
C, M, Y: 10,000 sheets*
Starter Kits:
Black: 10,000 sheets*
C, M, Y: 5,000 sheets*

*A4 with 5% coverage

Options

Internal Options: 20 GB Hard Disk
(for font downloading, collation, Sample
Print™ and Locked Print™)
32 MB, 64 MB, 128 MB, 256 MB SDRAM DIMM
IEEE1394 (FireWire®) Interface
Starter Kits: Paper Tray 1 x 500 sheets
Paper Tray 2 x 500 sheets
2,000-sheets Large Capacity Tray
Duplex Unit
2,000-sheet Finisher (with optional Punch kit)
4-bin Mailbox



Ricoh has determined that this product meets the
ENERGY STAR guidelines for energy efficiency.

Ricoh has been granted a certificate of ISO 9001,
which is the International Standard for Quality Systems.

Ricoh believes in conserving the earth's precious natural
resources. This brochure is printed on environmentally
friendly paper.

Aficio™ is a registered trademark of Ricoh. Macintosh is
a registered trademark of Apple Computers. UNIX® is a
registered trademark of UNIX System Laboratories.
Windows®, Windows® 95 and Windows® NT are registered
trademarks of Microsoft® Corporation.

Specifications and external appearance are subject to
change without notice. The colour of the actual product
may vary from the colour shown in this brochure.

RICOH
Image Communication

Home Page: <http://www.ricoh-europe.com>

RICOH EUROPE B.V. Groenelaan 3, P.O. Box 114, 1180 AC Amstelveen, The Netherlands. Phone: +31 (0)20-5474111 Fax: +31 (0)20-6418601

For more information, please contact: